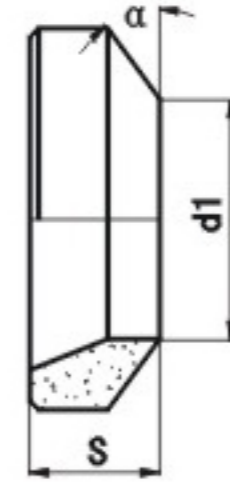
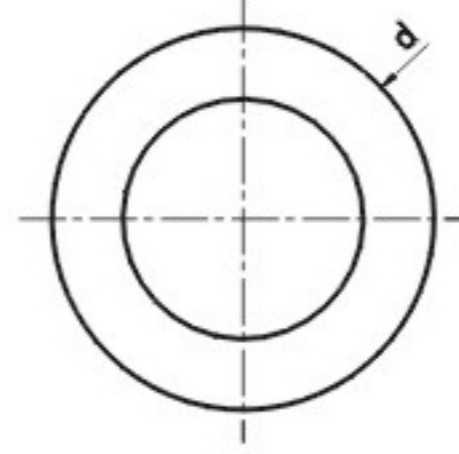
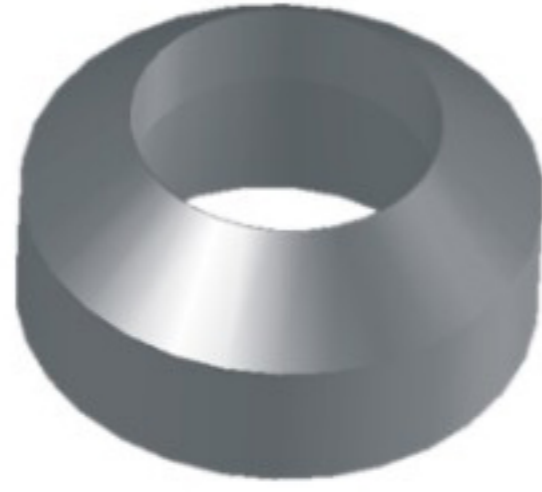


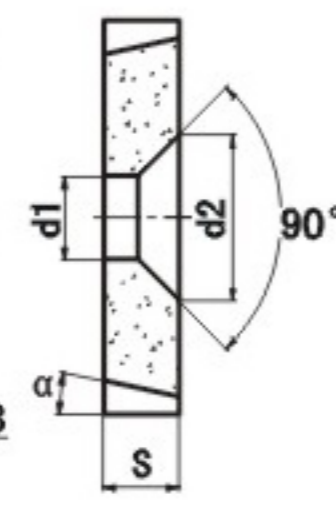
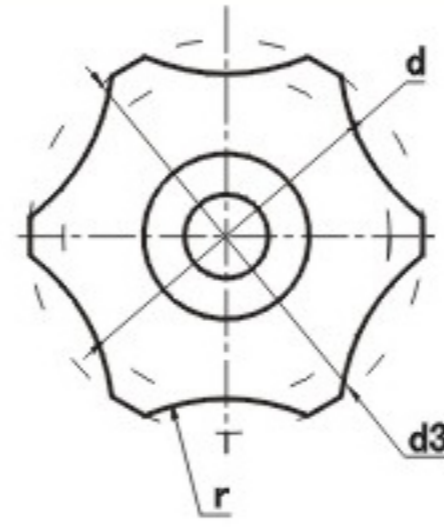
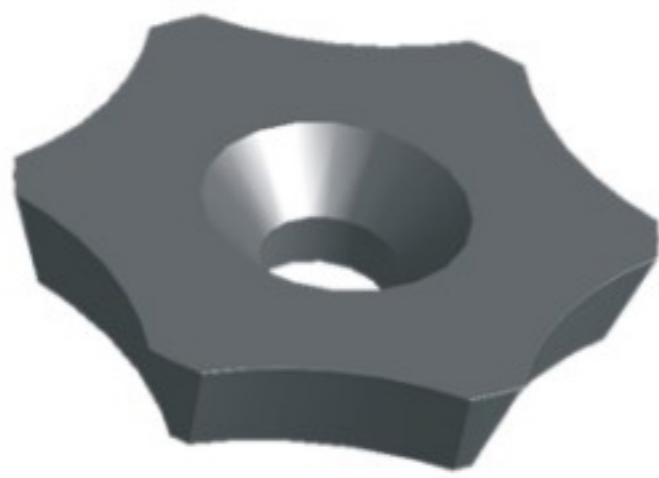


焊管加工用刀片

焊管毛刺刀片

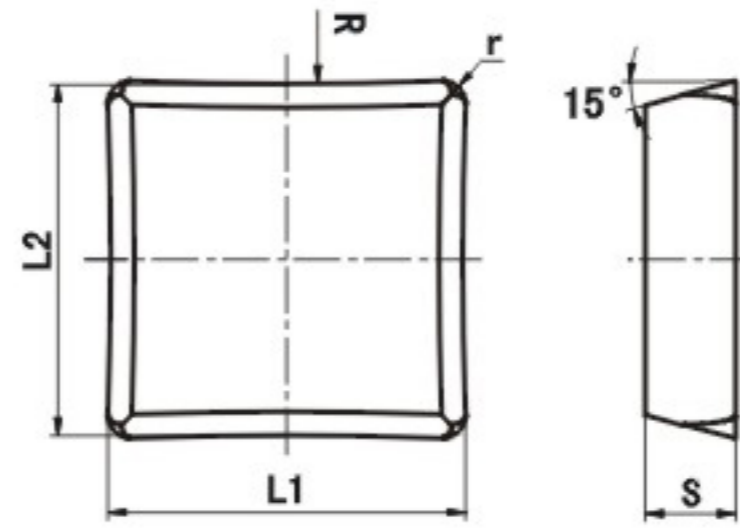


型号	尺寸(mm)				材料牌号		
	d	s	d1	α	GY18	GY46	GYC40
107JD1-2	10	5.5	6	43°	○	●	○
107JD1-3	13	6	8	38°	○	●	○
107JD1-4.1	22	10.03	11.99	36°	○	●	○
107JD1-4.2	22	9.91	14.99	36°	○	●	○
107JD1-5	30	12.01	20.02	36°	○	●	○
107JD1-6	35	11.89	22.02	36°	○	●	○

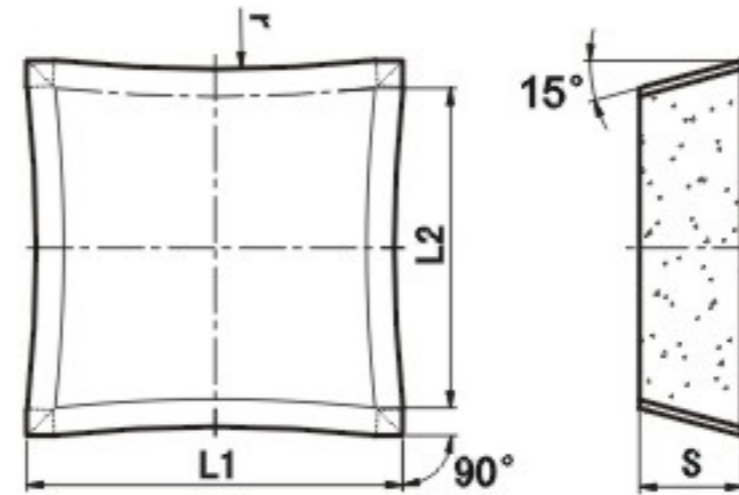


型号	尺寸(mm)							材料牌号		
	d	s	d1	d2	d3	α	r	GY18	GY46	GYC40
107JD3-6	20.7	7.76	5.3	10.5	25	18°	47.63	●	○	
107JD3-5	20.7	7.76	5.3	10.5	25	18°	38.89	●	○	
107JD3-4	20.7	7.76	5.3	10.5	25	18°	27.51	●	○	
107JD3-3	20.7	7.76	5.3	10.5	25	18°	21.79	●	○	
107JD3-2	20.7	7.76	5.3	10.5	25	18°	16.71	●	○	
107JD3-1	20.7	7.76	5.3	10.5	25	18°	13.54	●	○	

焊管毛刺刀片

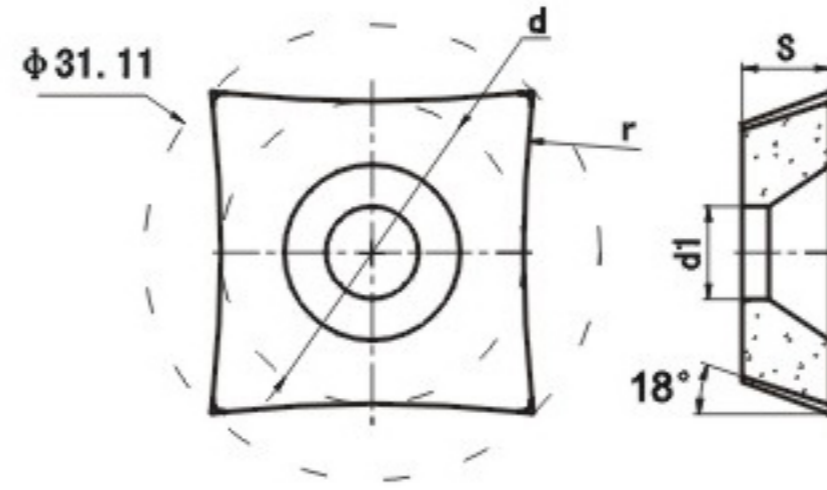
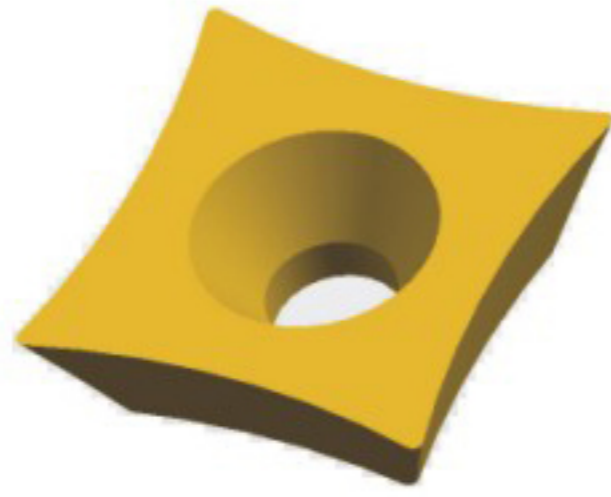


型号	尺寸(mm)					材料牌号		
	L1	L2	s	R	r	GY18	GY46	GYC40
0651003-06009	25.4	-	6.35	-	1.6	●	○	
0651003-R300	25.4	24.98	6.35	300	1.6	●	○	
0651003-R340	25.4	25.04	6.35	340	1.6	●	○	
0651003-R400	25.4	25.1	6.35	400	1.6	●	○	
0651003-R550	25.4	25.18	6.35	550	1.6	●	○	

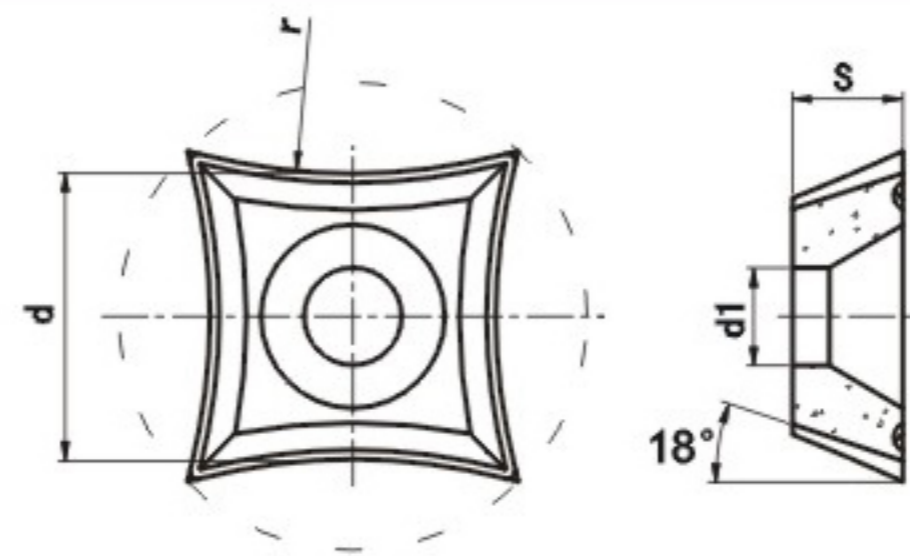


型号	尺寸(mm)				材料牌号		
	L1	L2	s	r	GY18	GY46	GYC40
0652001-06.031	35	30	9.6	145	●	○	
0652001-06.032	35	30	9.6	300	●	○	
0652001-06.033	35	30	9.6	400	●	○	
0652001-06.034	35	30	9.6	550	●	○	
0652001-06.035	35	30	9.6	-	●	○	

焊管加工用刀片

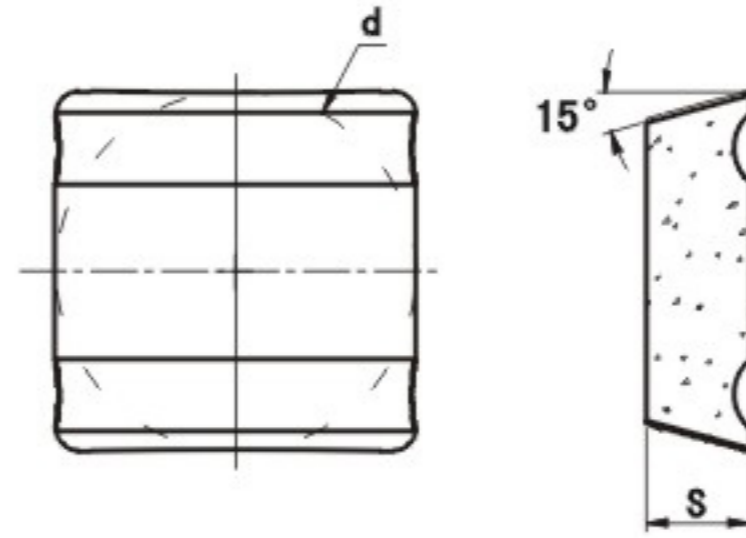
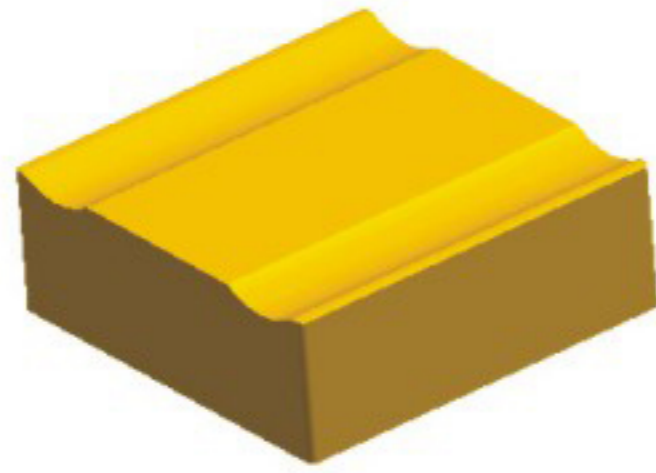


型号	尺寸(mm)				材料牌号		
	d	s	d1	r	GY18	GY46	GYC40
21.07×21.07×6	21.07	6	6.3	130	●	○	
20.12×20.12×6	20.12	6	6.3	65	●	○	
20.48×20.48×6	20.48	6	6.3	80	●	○	
20.72×20.72×6	20.72	6	6.3	95	●	○	

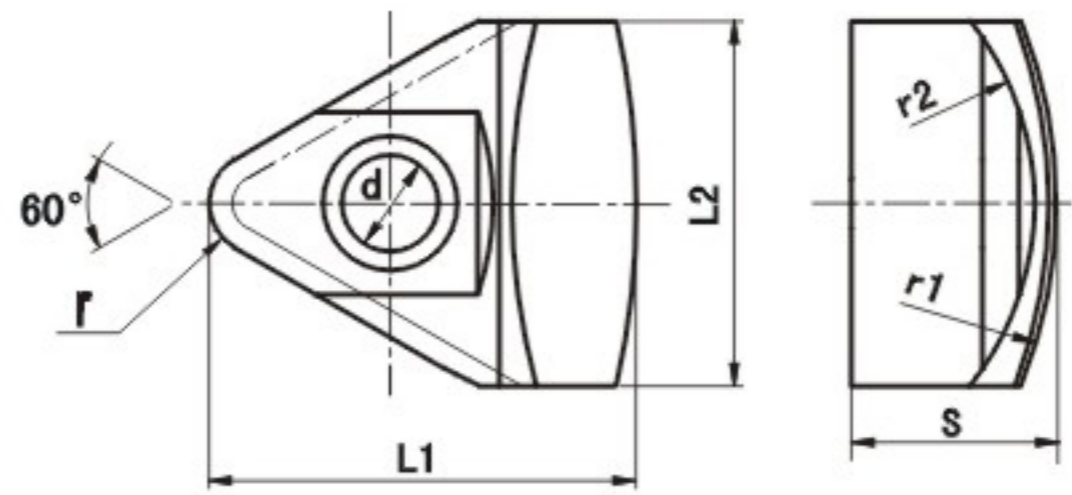
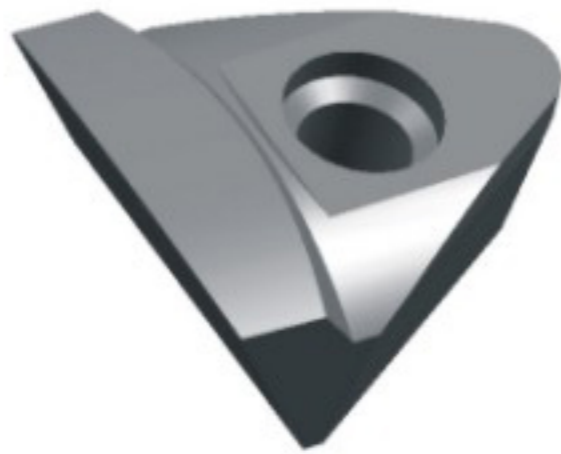


型号	尺寸(mm)				材料牌号		
	d	s	d1	r	GY18	GY46	GYC40
15.65×15.65×6	15.65	6	5.3	35	●	○	
16.52×16.52×6	16.52	6	5.3	55	●	○	

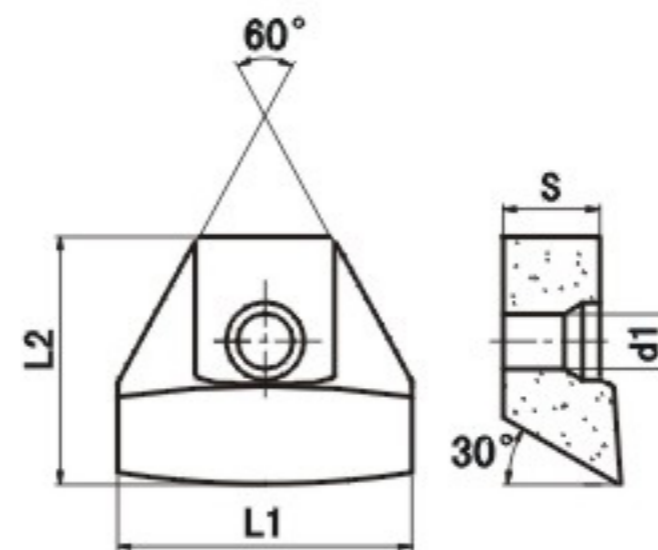
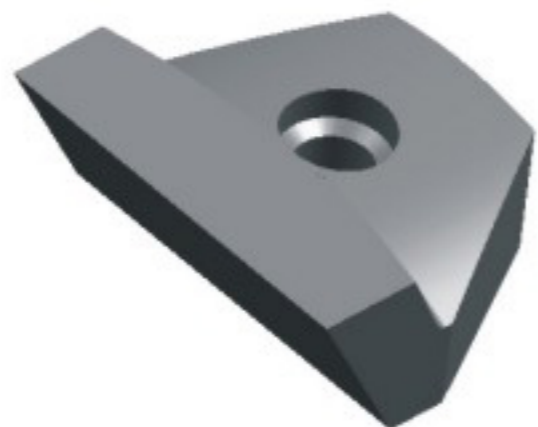
焊管毛刺刀片



型号	尺寸(mm)		材料牌号		
	d	s	GY18	GY46	GYC40
25.4X25.4X7.35T	25.4	7.35	●	○	

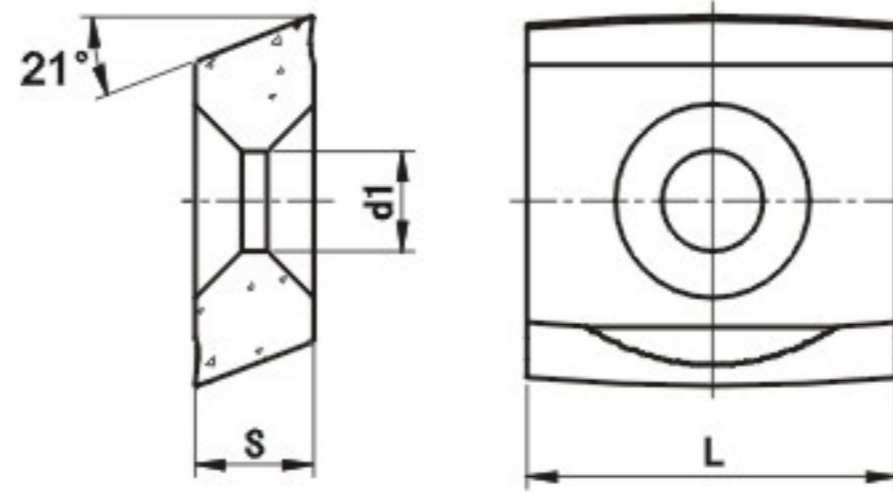
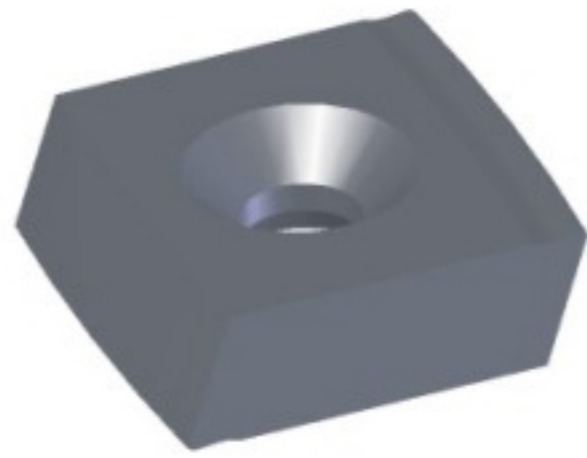


型号	尺寸(mm)							材料牌号		
	L1	L2	s	d1	r	r1	r2	GY18	GY46	GYC40
29.5X25X12.5	29.5	25	14	6.6	3.5	35	20	○	●	

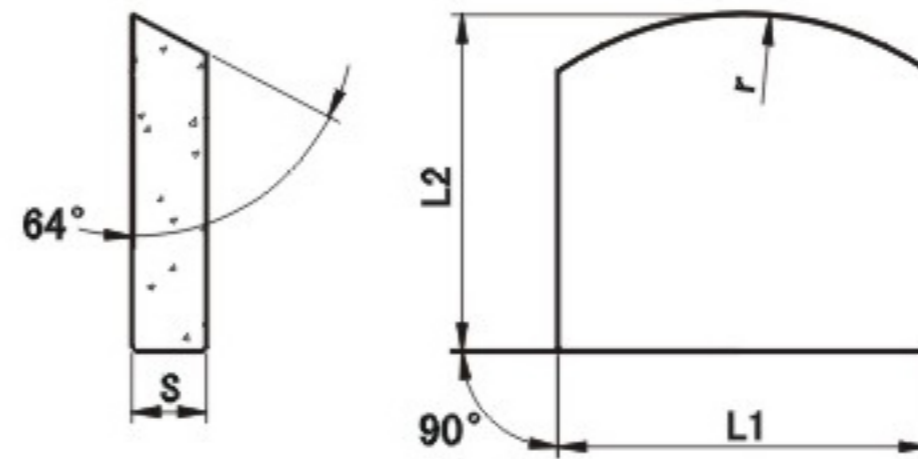
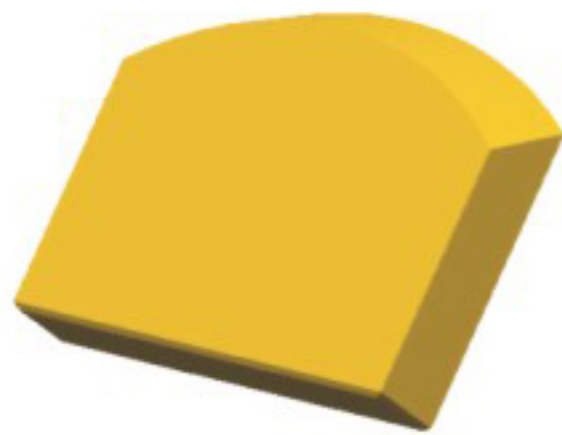


型号	尺寸(mm)				材料牌号		
	L1	L2	s	d1	GY18	GY46	GYC40
29.5X35X12.5	35	29.5	11.5	6.6	○	●	

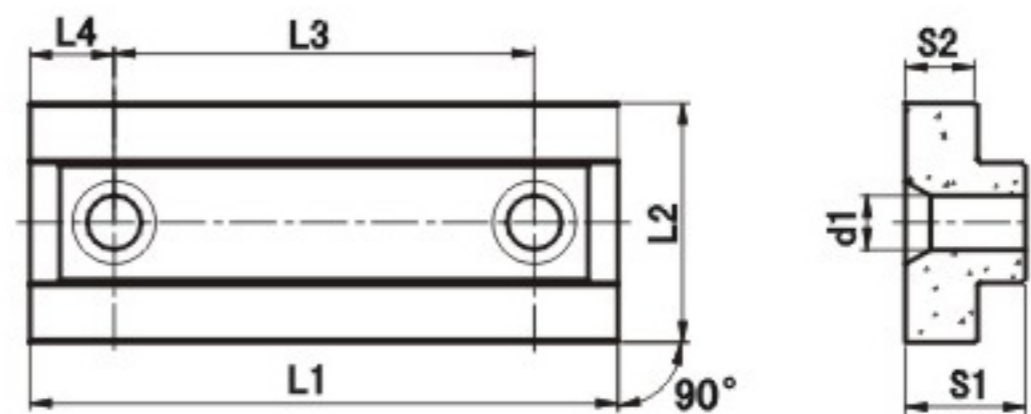
焊管加工用刀片



型号	尺寸(mm)			材料牌号		
	L	s	d1	GY18	GY46	GYC40
H6V7881	25	8	6.8	○	●	

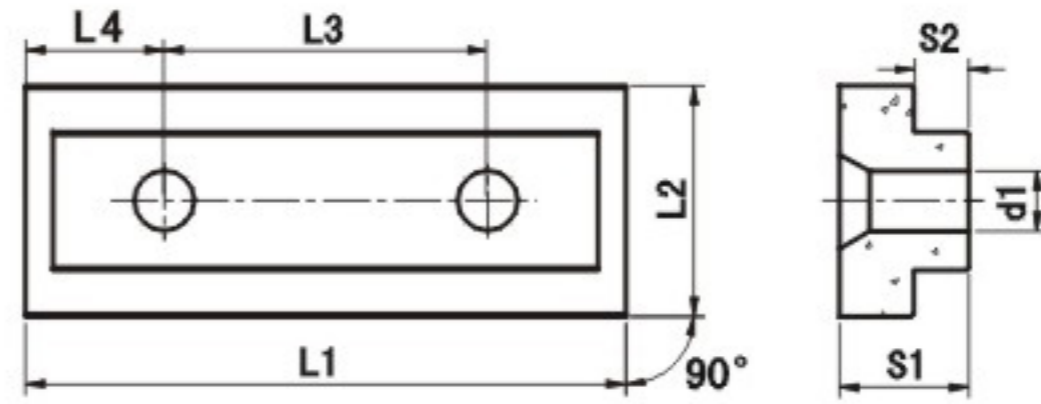


型号	尺寸(mm)				材料牌号		
	L1	L2	s	r	GY18	GY46	GYC40
LTR-40	45	36.5	8	41	○	●	

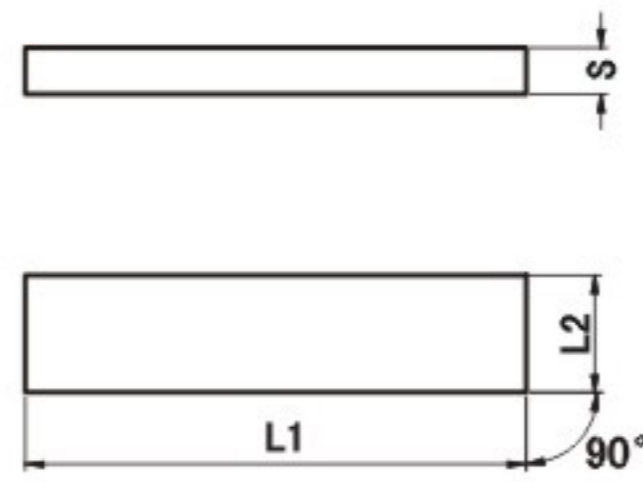


型号	尺寸(mm)							材料牌号		
	L1	L2	L3	L4	s1	s2	d1	GY18	GY46	GYC40
LNx4910	49	20	35	7	10	6	4.5			●

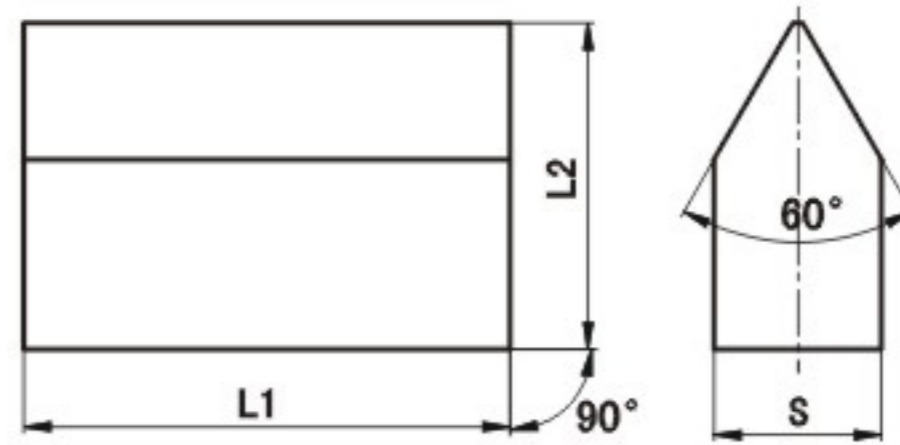
焊管毛刺刀片



型号	尺寸(mm)							材料牌号		
	L1	L2	L3	L4	s1	s2	d1	GY18	GY46	GYC40
LNx6514	59	25	35	15	14	8	6.5			●

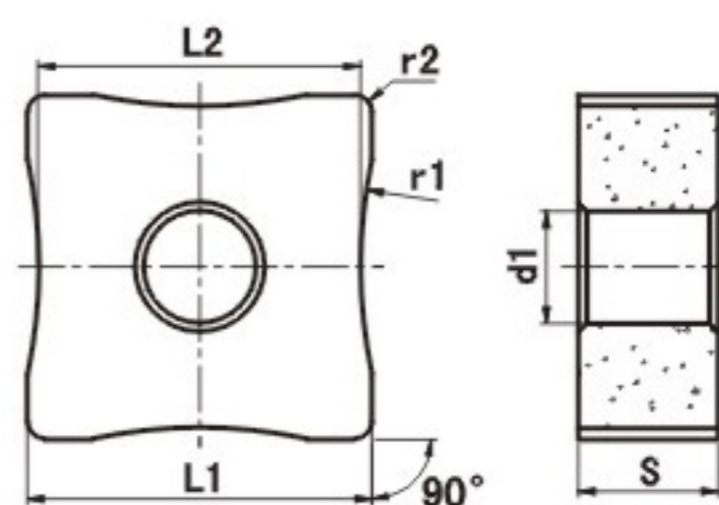
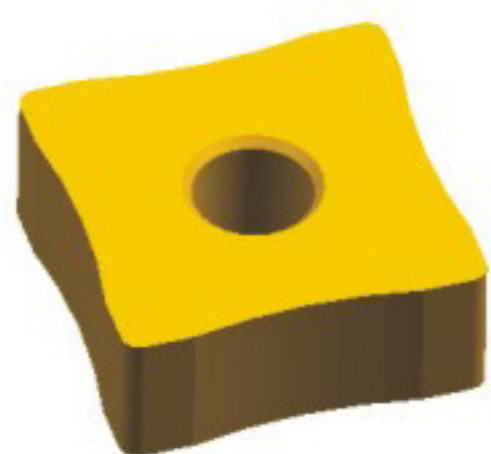


型号	尺寸(mm)			材料牌号		
	L1	L2	s	GY18	GY46	GYC40
LNx6908	69	15	8			●
LNx8508	85	20	8			●

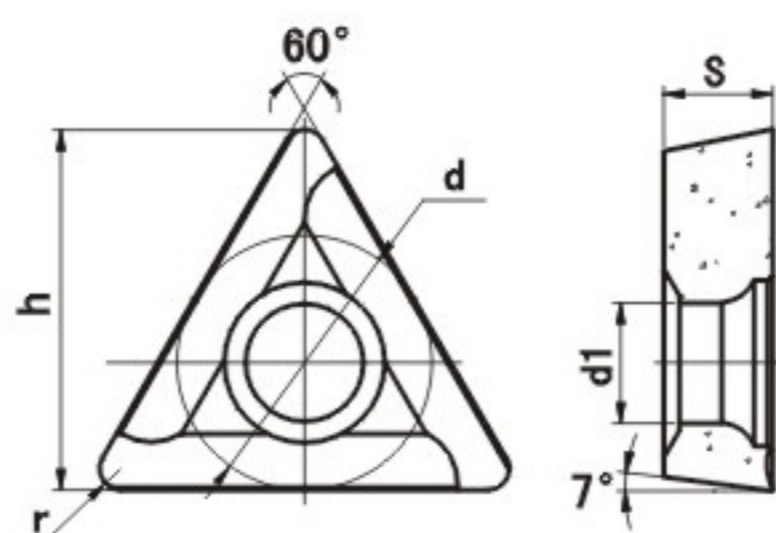
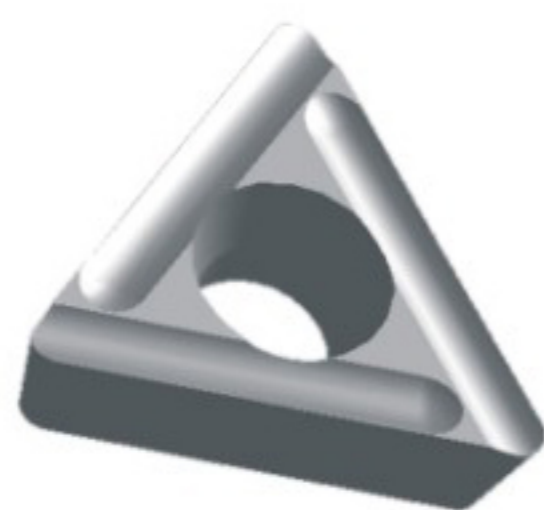


型号	尺寸(mm)			材料牌号		
	L1	L2	s	GY18	GY46	GYC40
LNT301004	30	20	10			●

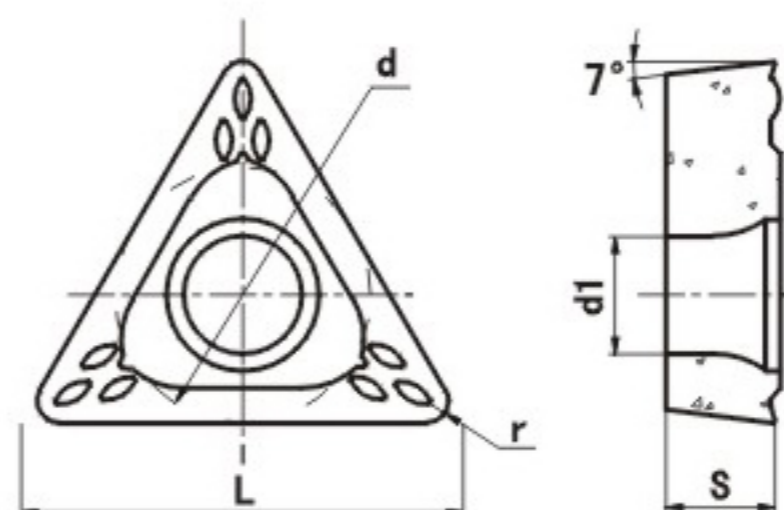
焊管加工用刀片



型号	尺寸(mm)						材料牌号		
	L1	L2	s	d1	r1	r2	GY18	GY46	GYC40
SNMG150608-R25	15.94	15	6.45	5.2	25	0.8	○	●	



型号	尺寸(mm)					材料牌号		
	d	h	s	d1	r	GY18	GY46	GYC40
TCMX16T304-FR	9.525	13.49	3.97	4.5	0.4	○	●	
TCMX16T308-FR	9.525	13.49	3.97	4.5	0.8	○	●	



型号	尺寸(mm)					材料牌号		
	L \approx	d	s	d1	r	GY18	GY46	GYC40
TCMT16T308	16.5	9.525	3.97	4.4	0.8	○	●	

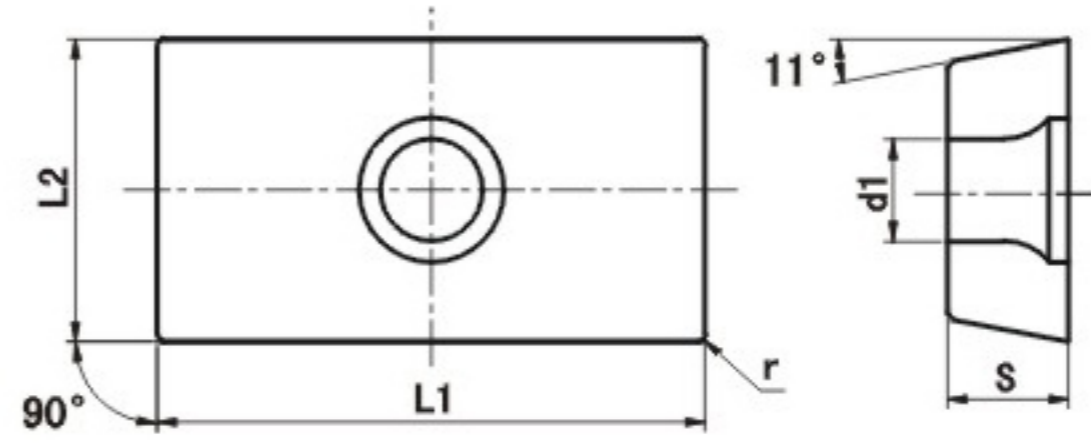
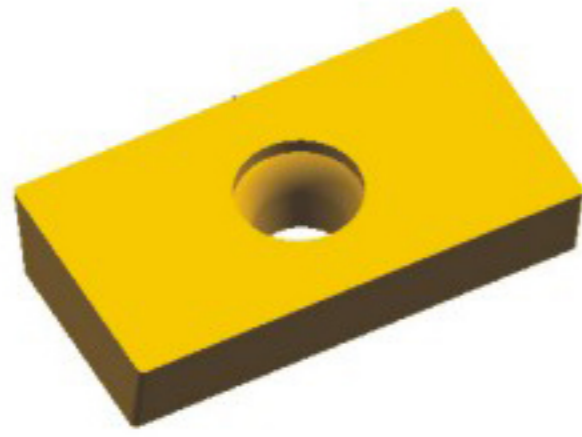
焊管铣边刀片

型号	尺寸(mm)			材料牌号	
	d	s	d1	GY34	GY53
SNMG2007	20	7	6.4	○	●

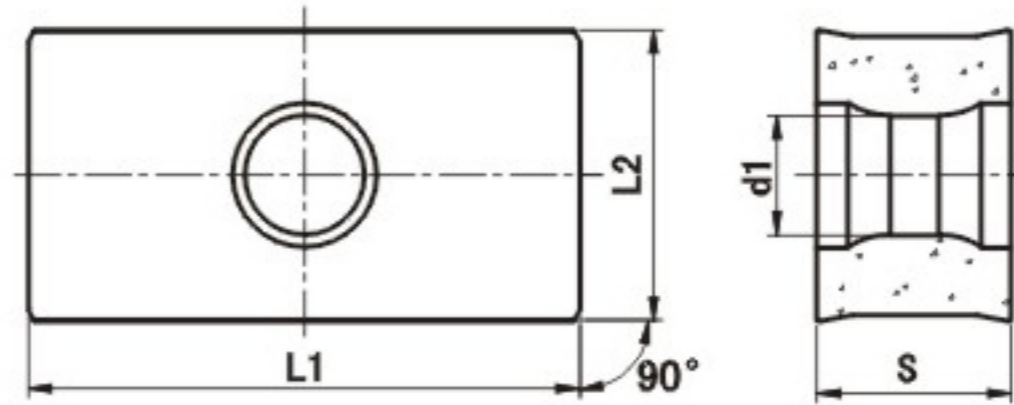
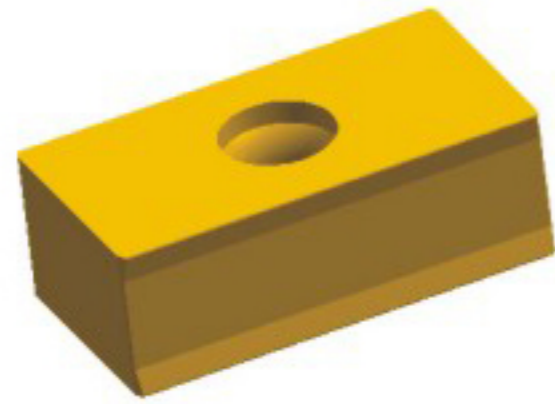
型号	尺寸(mm)				材料牌号	
	d	h	s	d1	GY34	GY53
TPGW3307T	19.05	25.05	7	6.7	○	●

型号	尺寸(mm)				材料牌号	
	d	h	s	d1	GY34	GY53
TPGW3307T-C	19	27	6.98	6.7	○	●

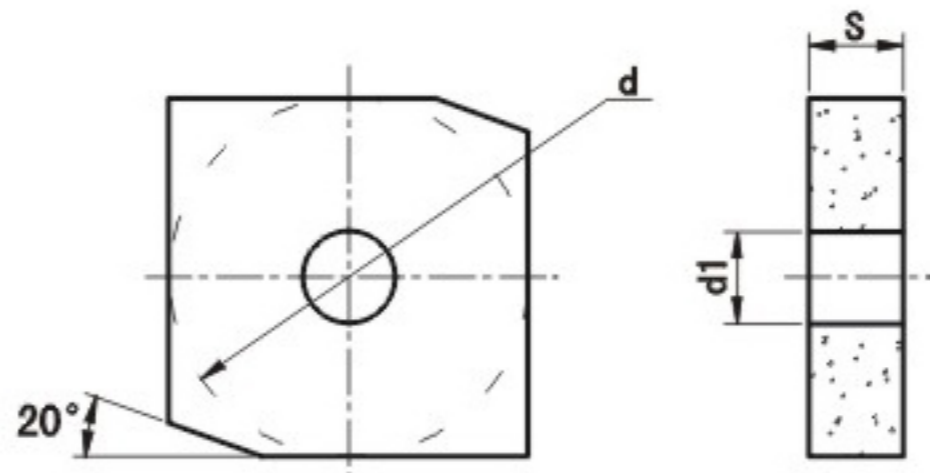
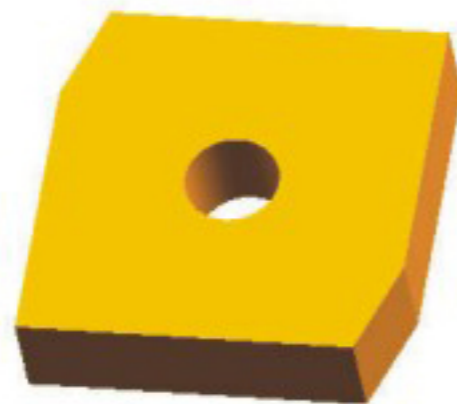
焊管加工用刀片



型号	尺寸(mm)					材料牌号	
	L1	L2	s	d1	r	GY34	GY53
矩形36×20×8	36	20	8	6.7	0.5	○	●

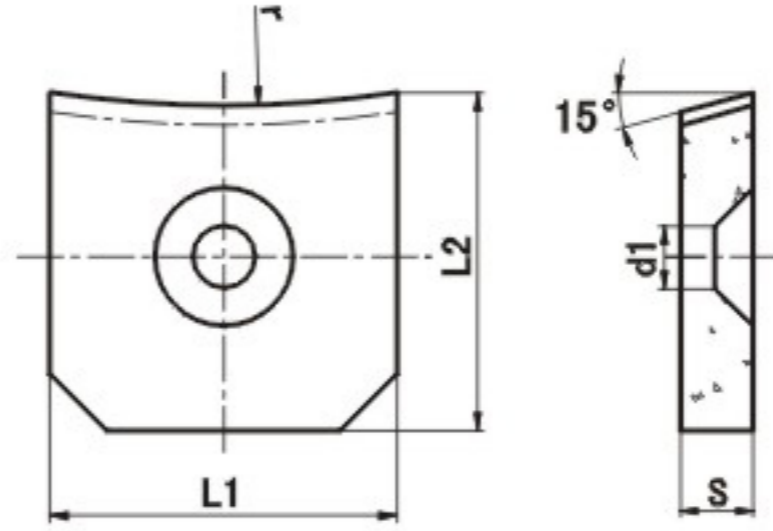
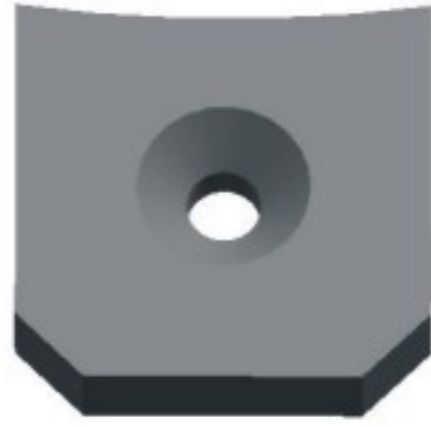


型号	尺寸(mm)				材料牌号	
	L1	L2	s	d1	GY34	GY53
LNC3619	36	19	12.7	7.8	○	●

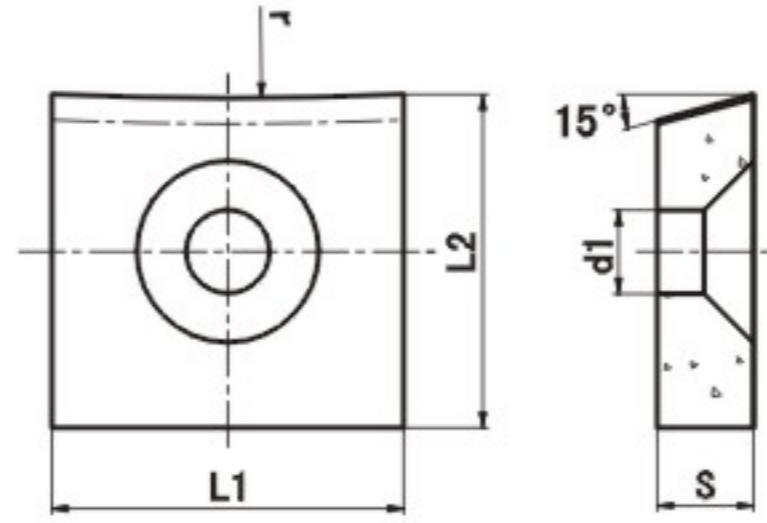
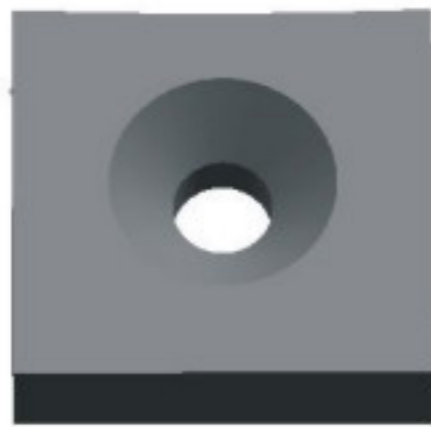


型号	尺寸(mm)			材料牌号	
	d	s	d1	GY34	GY53
SNMX3509X	35	9.2	9	○	●

配套刀垫



型号	尺寸(mm)					材料牌号
	L1	L2	s	d1	r	GY74
TS3509	30.2	29.39	6.35	5.4	105	●



型号	尺寸(mm)					材料牌号
	L1	L2	s	d1	r	GY74
TS2507	23.2	22	6.35	5.5	270	●